



The Data Model-Centric Platform with Datavault Low-Code Technology

Acceliance

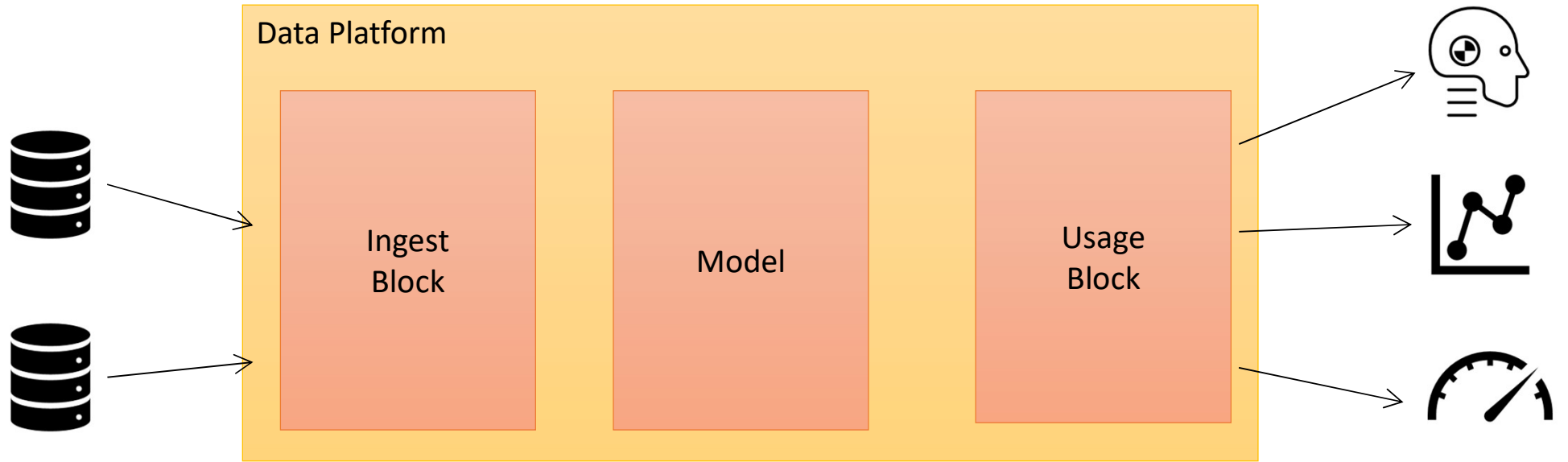
A photograph of a person wearing a blue and red plaid shirt, working on the engine of a car with the hood open. The person's hands are visible, one resting on the edge of the hood and the other near the engine components. The background is a blurred green lawn and trees. The text 'Ingestion-Centric Strategy – Model as Code' is overlaid on the left side of the image in white font. There is a small orange horizontal bar above the text.

Ingestion-
Centric
Strategy –
Model as Code



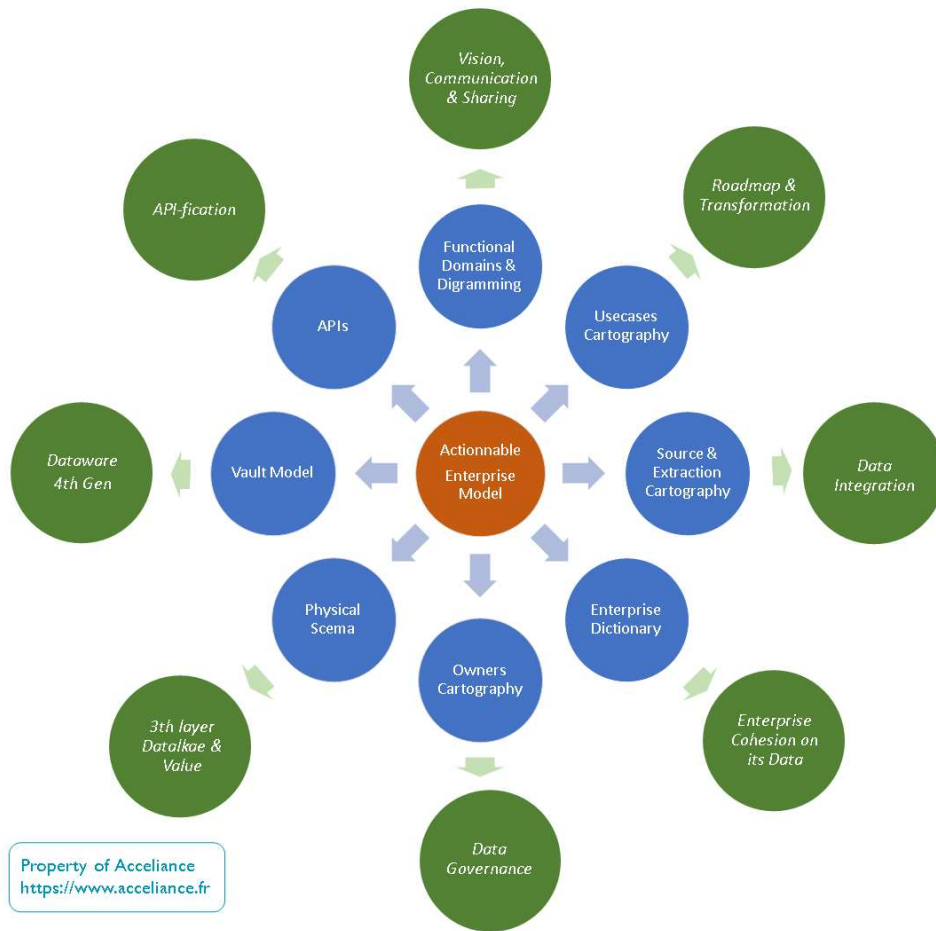
A photograph of a modern automotive manufacturing plant. Several orange robotic arms are positioned around a car chassis on an assembly line. The scene is brightly lit with industrial overhead lights. The text "Model-centric strategy – code as model" is overlaid in white, centered on the image. A thin white horizontal line is positioned below the text.

Model-centric strategy –
code as model



A 3D rendering of a puzzle. The puzzle pieces are arranged on a surface that transitions from dark grey on the left to white on the right. One piece, located in the center-right, is a vibrant red color and stands out prominently from the other pieces, which are either light grey or white. The lighting creates soft shadows, giving the pieces a three-dimensional appearance.

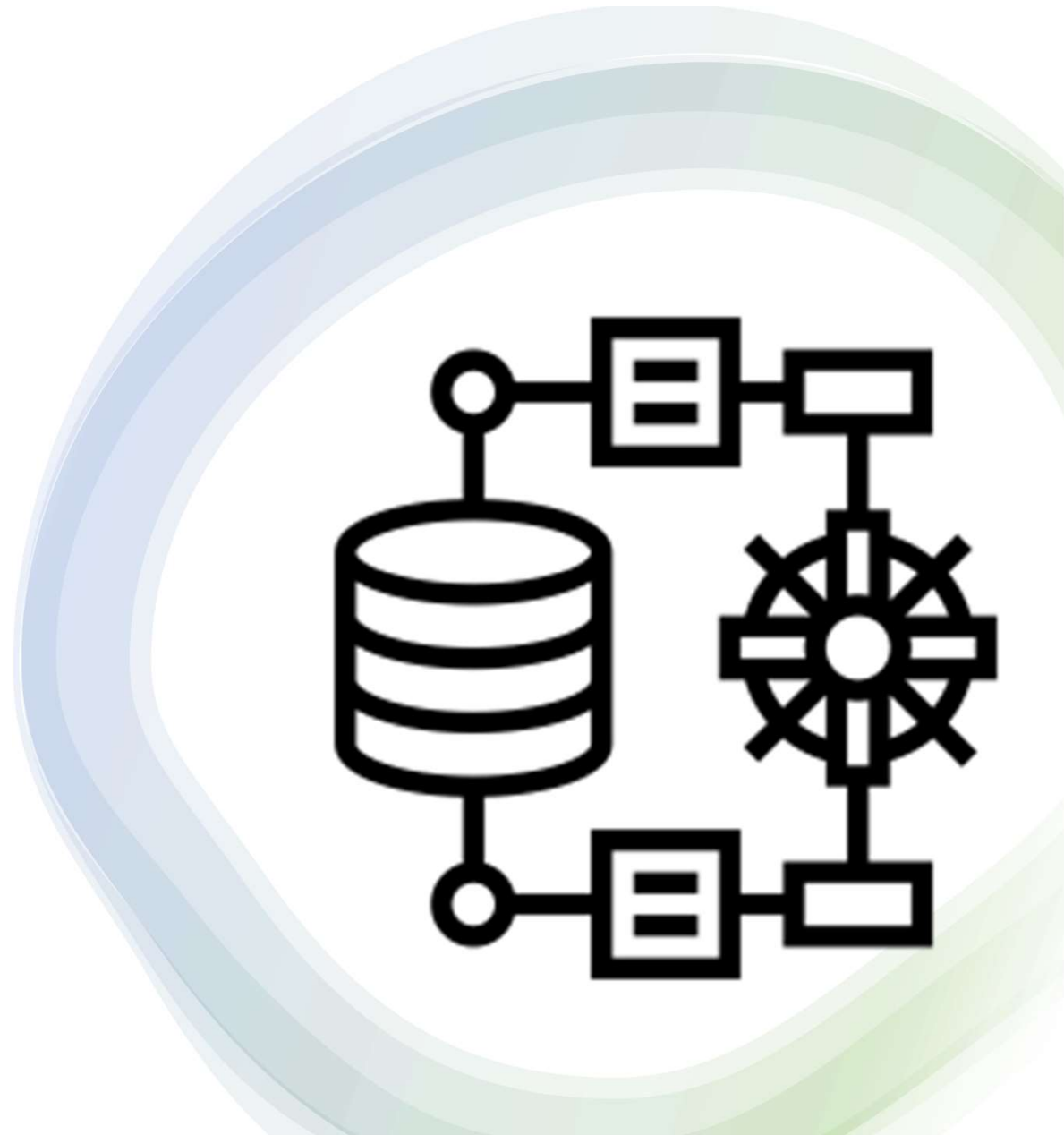
The Enabler

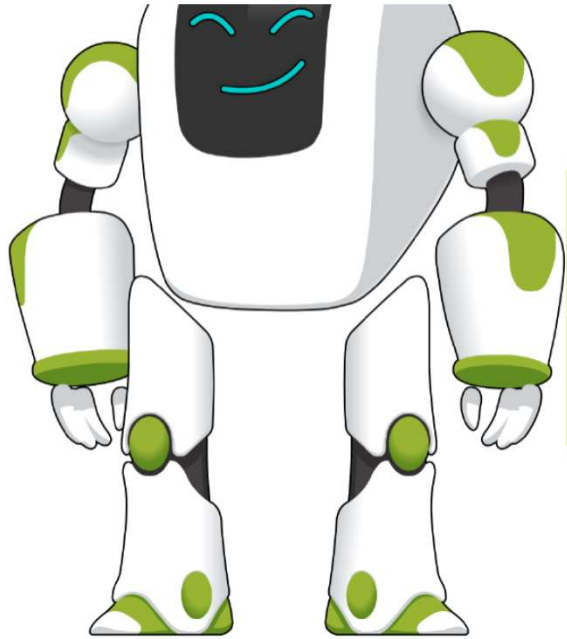


Architecture's digital journey

Vault & Concepts Modeling

- **The Hub (SQL table)**
 - Contains the business key for all source systems
 - Generates a high-performance technical internal key (hash)
- **The Satellite (SQL table)**
 - Technically linked (hash) to the Hub
 - Corresponds to a data source
 - Non-breaking (and technically non-scalable) data loading unit
 - Contains one or more source attributes (SQL column)
- **The Link (SQL table)**
 - Supports any cardinality ("many to many" internally)
 - Relation on technical key (hash)





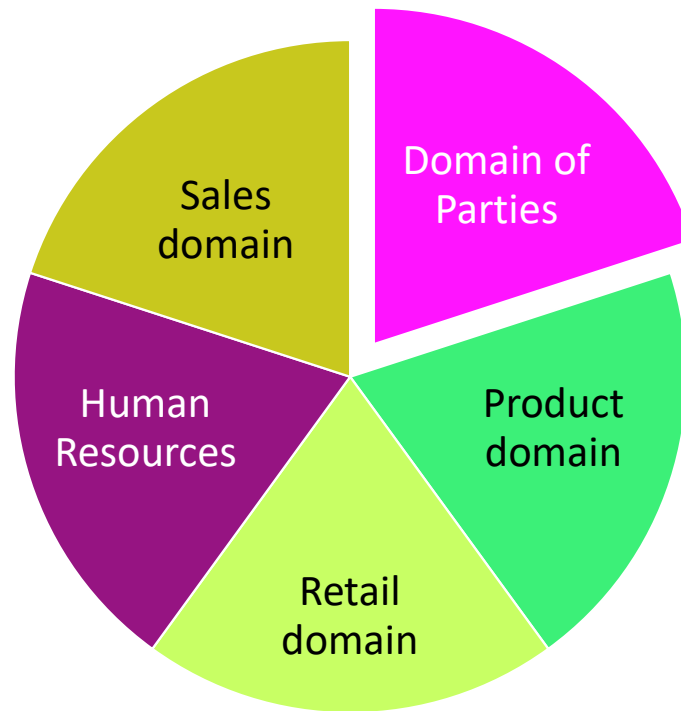
Datavault

BUILDER

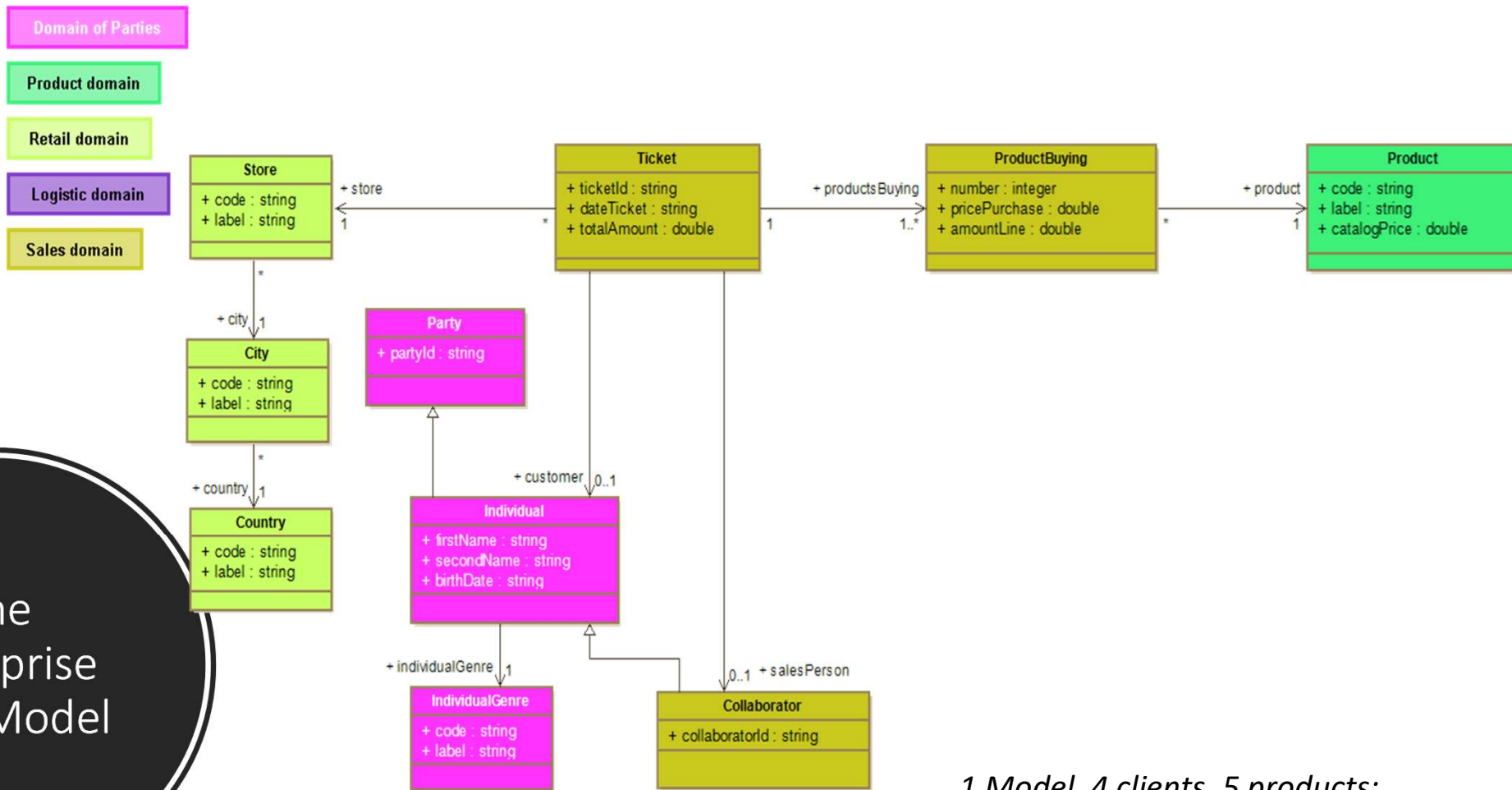
La solution
Datavault
Builder

- Automates the creation of SQL tables for Vault artifacts
 - Hubs, Satellites and Links
 - Source System Business Keys
 - High-performance internal hash key
- Automates the parallelized loading plan
 - Numerous connectors
 - Visual Setup
- Creating Dimensional Views

Colorized Data Functional Areas as defined by the Chief Data Officer



The Enterprise Data Model



- 1 Model, 4 clients, 5 products:
- Finance : Turnover, Profitability
 - RH : Collabs performance
 - Sales : Sales volume
 - Marketing : Product performance

Reporting

Country

- + code : string
- + label : string

City

- + code : string
- + label : string

Store

- + code : string
- + label : string

- labelCountry, labelCity, labelStore
- ^ China
 - ^ Pekin
 - Shangai Center Store
- ^ France
 - ^ Paris
 - Magasin Champs Elysées
 - Magasin Rivoli
- ^ Spain
 - ^ Madrid
 - Madrid Center Store

Somme de TotalLigne par dateTicket



Collaborator

- + collaboratorId : string

Individual

- + secondName : string
- + firstName : string
- + birthDate : string

SalesCollaborateur

- MAT_0001 : Cambet Bruno
- MAT_0002 : Louise Marie
- MAT_0003 : Lee Bruce
- MAT_0004 : Chan Jackie

dateTicket

Product

- + code : string
- + label : string
- + catalogPrice : double

labelProduct

- Chaussettes
- Manteau
- Pantalon

Acceliance Stack

Design



MODELIOSOFT

Connect & Tailor



Datavault
BUILDER

Run & Perform



snowflake



Azure
Synapse
Analytics



Google
BigQuery



PostgreSQL

Cloud



Azure

amazon



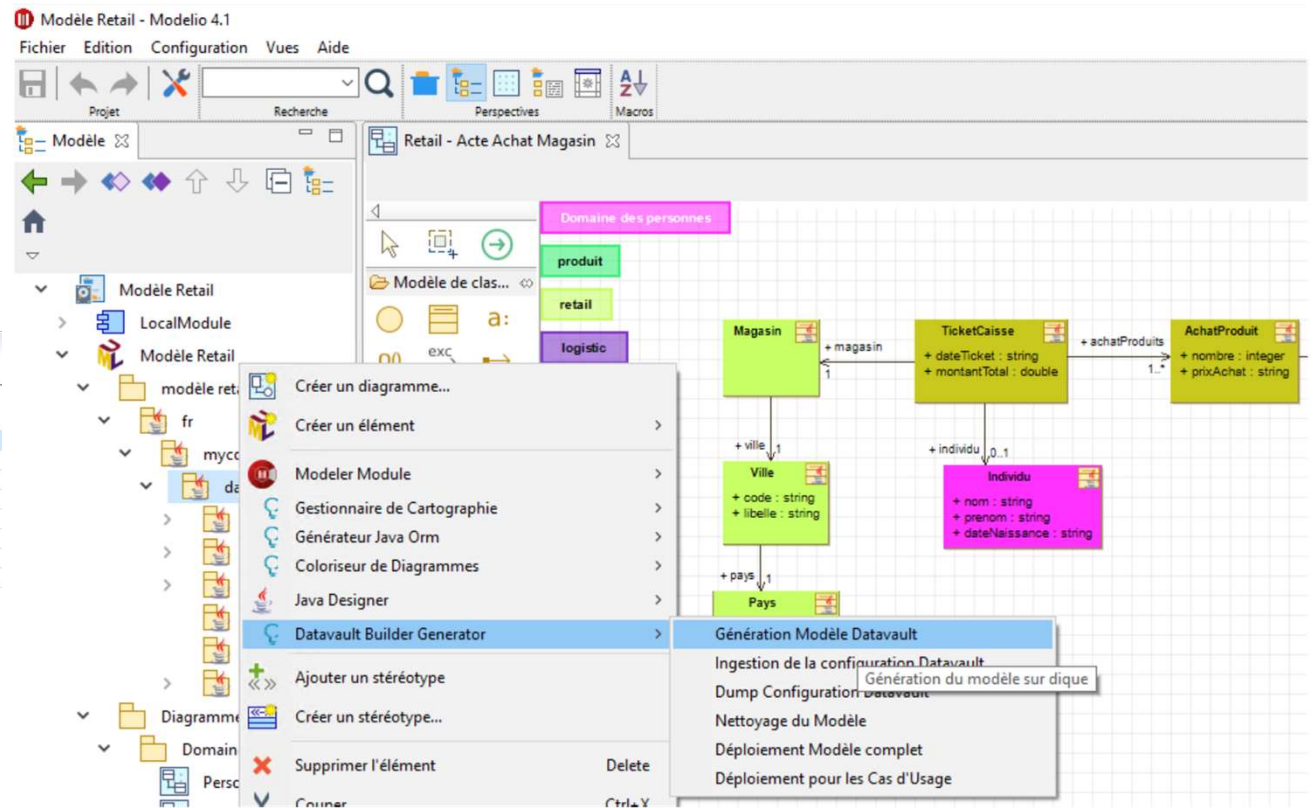
Google Cloud



Alibaba Cloud

Modelio Augmentation & Automation

Nom	Valeur	Scope
Paramètres des modules du projet		
Sélectionnez un module dans la liste 'Modules du projet' pour éditer ses paramètres.		
Utilisateur	Datavault Builder Generator	5.3.01 Démarré Gratuit Compatible
▼ Paramètres des modules du projet		
Sélectionnez un module dans la liste 'Modules du projet' pour éditer ses paramètres.		
Nom	Valeur	Scope
Datavault Builder Generator		
Génération Datavault		
Chemin Datavault Builder	C:\Users\joset\source\repos\modelio_models\mod...	Utilisateur
Génération du domaine DVB à partir de PackageC	<input type="checkbox"/>	Utilisateur
Génère fichier ZIP	<input checked="" type="checkbox"/>	Utilisateur
Base de données cible	PostGre	Utilisateur
Versión DatavaultBuilder	7.0.0	Utilisateur
Versión de génération DVB		Utilisateur
Crée dimensions	<input type="checkbox"/>	Utilisateur



A vintage-style microphone is the central focus, positioned on the left side of the frame. The microphone has a classic, ribbed grille and a polished, reflective surface. The background is a dark stage with vibrant, out-of-focus lighting in shades of purple, blue, and red. A bright spot of light is visible in the upper right corner, suggesting a stage light. The overall atmosphere is that of a live performance or recording session.

Live Demo

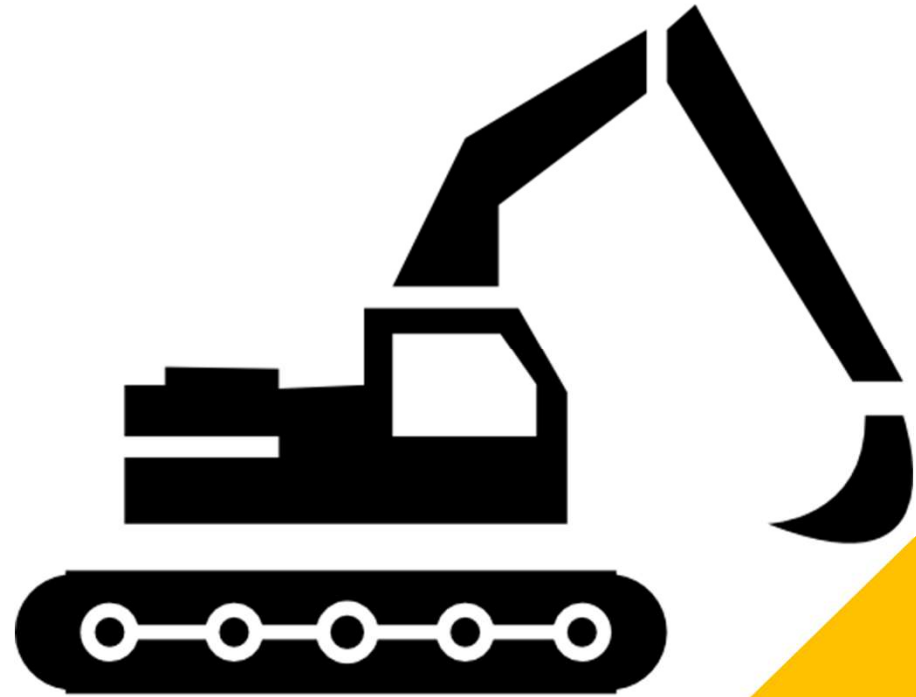
Benefits

- Mark To Market
 - Task Automation
 - Capitalization in each sprint
 - Synergy between employees
- Cost
 - Finops
 - Reduced device
- Compatibility
 - OnPrem / Cloud
 - Snowflake, Synapse, Synapse, Exasol, BigQuery
 - All reporting solutions





VS



To go further

- Consider a 20-40 day POC
- Website: <https://www.acceliance.fr>

